



104-106 N 7th Street

South Block between Wythe Avenue & Berry Street

**good
space**

licensed real estate broker

Size	Frontage	Ceiling Heights	Possession
3,635sf at Grade	42' on N 7th	16' at Grade	Q1 2024
3,904sf at 2nd + 1,470sf Terrace		14' at 2nd and 3rd	
1,890sf at 3rd + 1,350sf Terrace		10' at Lower	
2,000sf at Lower			

Space Features

- Mixed-use retail and boutique office building
- Single or multi-tenant opportunity
- Rooftop terraces on 2nd and 3rd floors
- Located one block away from Bedford (L) train station with 9M annual riders
- Next door to Catbird Jewelry flagship

Neighborhood Tenants

Glossier.

ATELIER BEAUTÉ
CHANEL

*

snow peak
BUCK MASON

HERMÈS

NIKE

Google

SUGARFISH

WARBY PARKER

patagonia

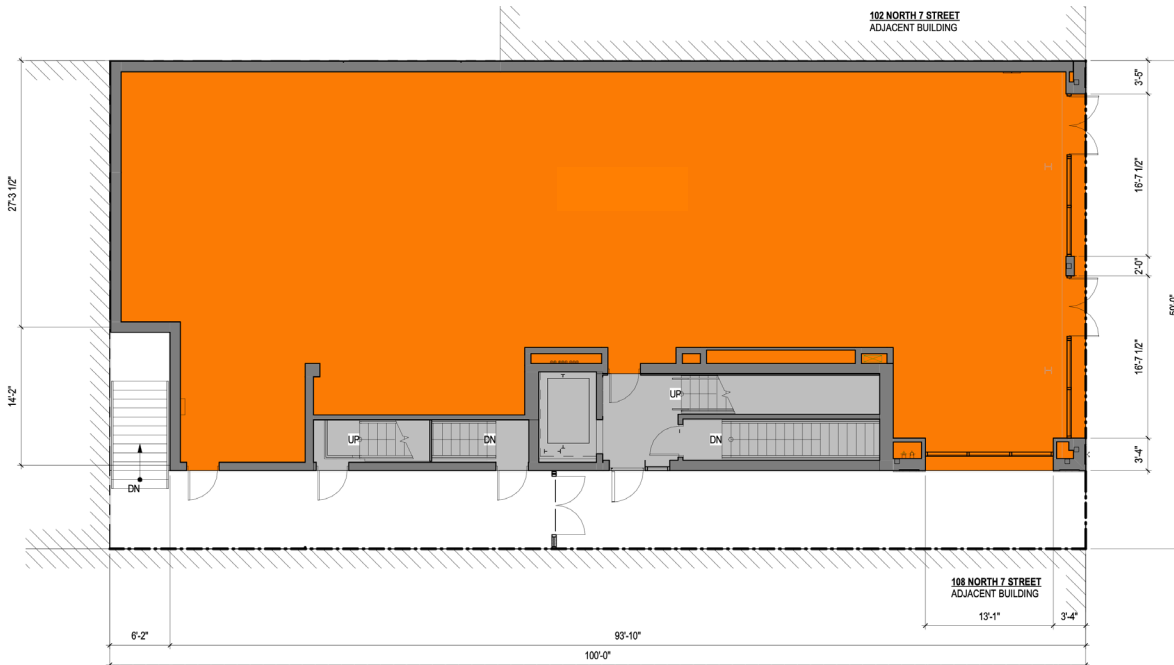
Catbird

BATHHOUSE

104-106 N 7th Street

South Block between Wythe Avenue & Berry Street

GROUND FLOOR



SECOND FLOOR

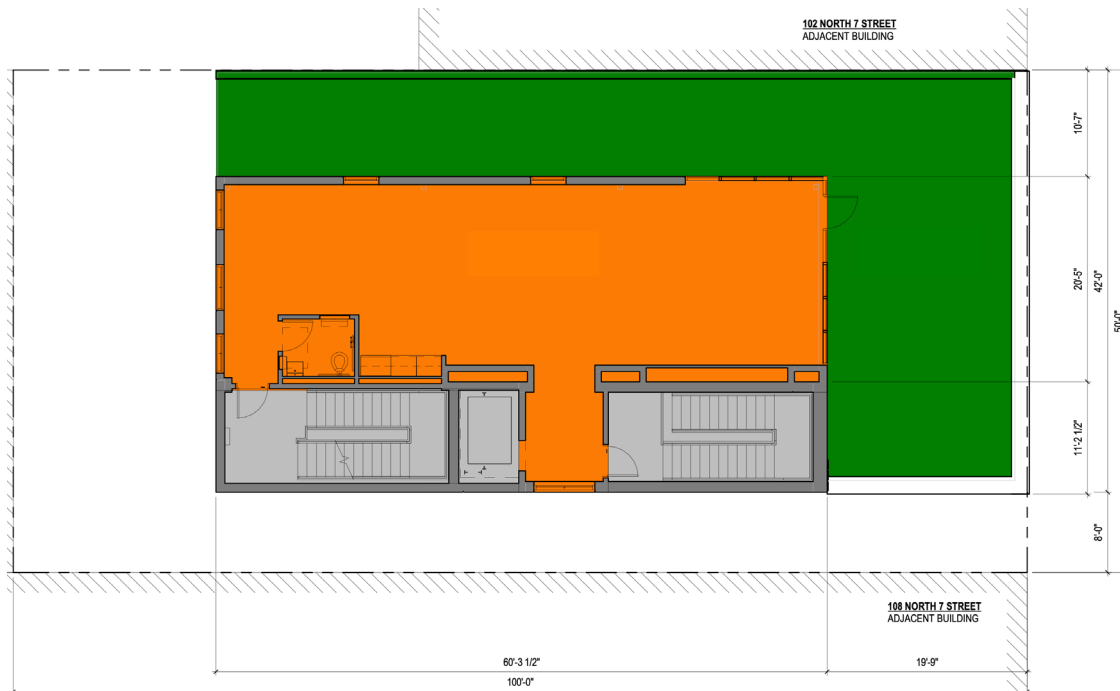


good
space®

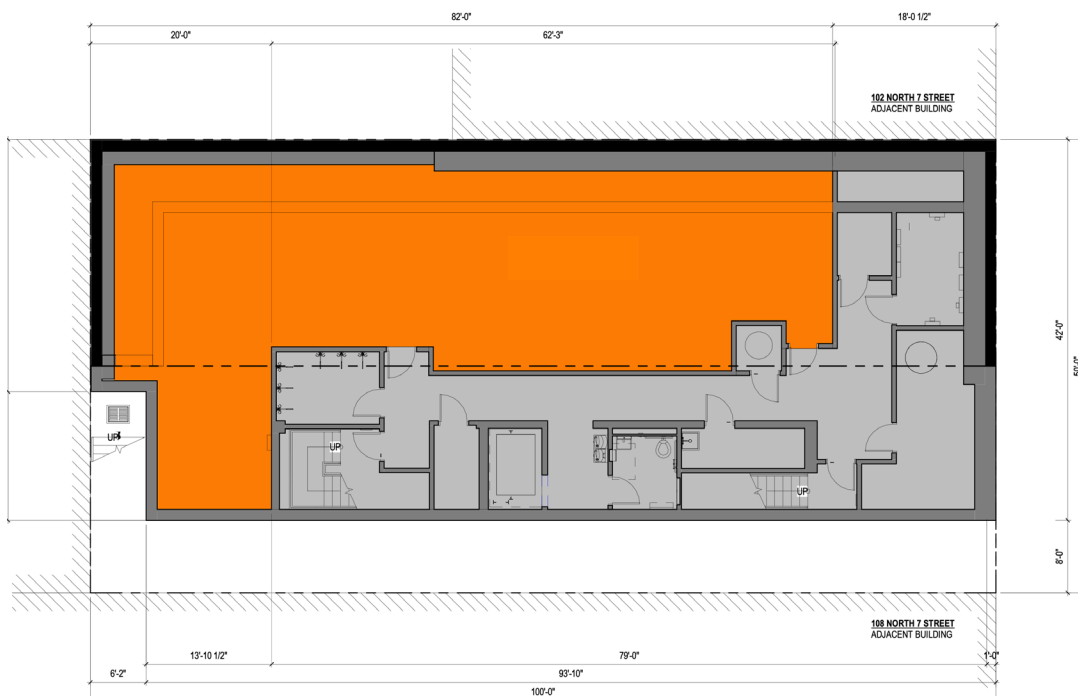
104-106 N 7th Street

South Block between Wythe Avenue & Berry Street

THIRD FLOOR



LOWER LEVEL



good
space.

104-106 N 7th Street

South Block between Wythe Avenue & Berry Street



SECOND FLOOR OFFICE





104-106
N 7TH ST

Annual Subway Ridership (2019)

L 9M Bedford Avenue

L G 4.6M Metropolitan Av/Lorimer St

Contact

Roberto Rhett
718.255.9900 x700
rr@goodspace.nyc

Hank O'Donnell
718.255.9900 x702
ho@goodspace.nyc