



153 Berry Street

East Block between N 5th & N 6th Streets

**good
space**[®]

licensed real estate broker

Size	Frontage	Ceiling Heights	Possession
2,394sf at Grade 1,770sf at Cellar 1,893sf at Second	22'	17' at Grade	Immediate

Space Features

- **Single-tenant flagship opportunity**
- **Strong visibility from North 6th Street**
- **Rare legal second floor terrace space of 427sf**
- **Elevator servicing Grade, Cellar and Second**
- **Vented for restaurant use**
- **Located on highly trafficked, pedestrian only, Berry Street**

Neighborhood Tenants

HERMÈS

WARBY PARKER

Partners
COFFEE ROASTERS

DS & DURGA

NIKE

Glossier.

Google

lululemon

ATELIER BEAUTÉ
CHANEL

LE LABO

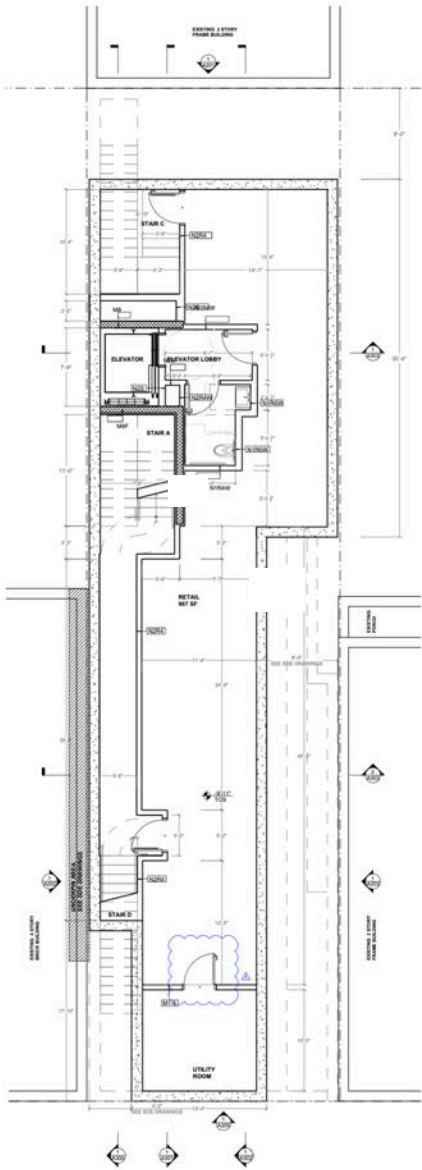
MEJURI

6660

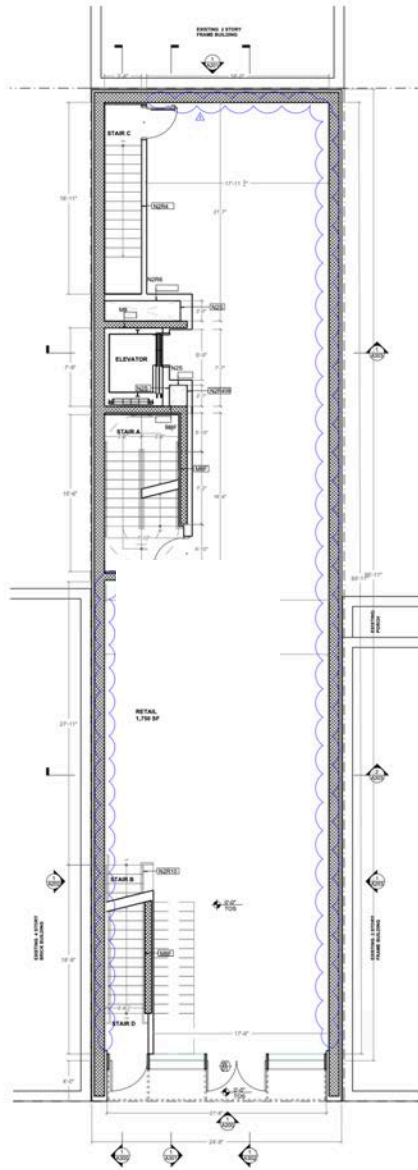
153 Berry Street

East Block between N 5th & N 6th Street

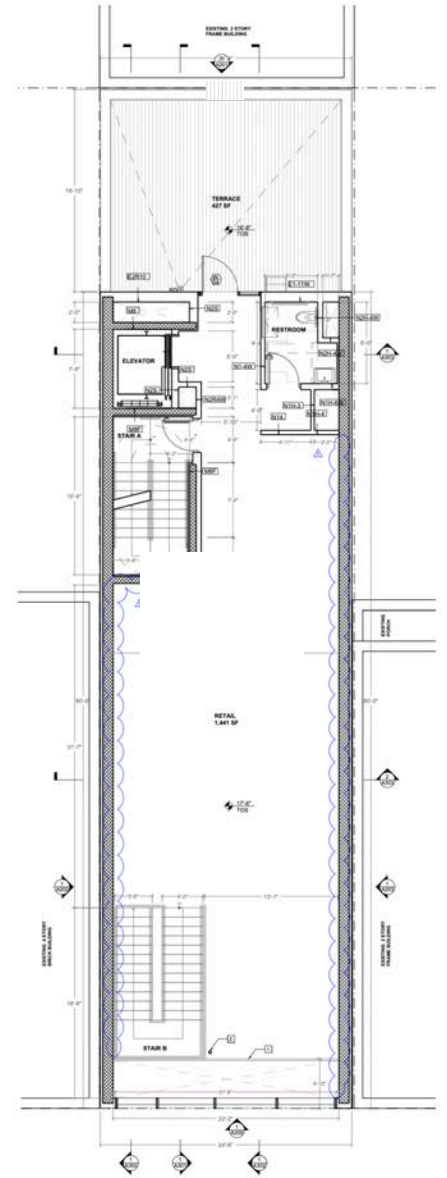
CELLAR



GROUND FLOOR



SECOND FLOOR



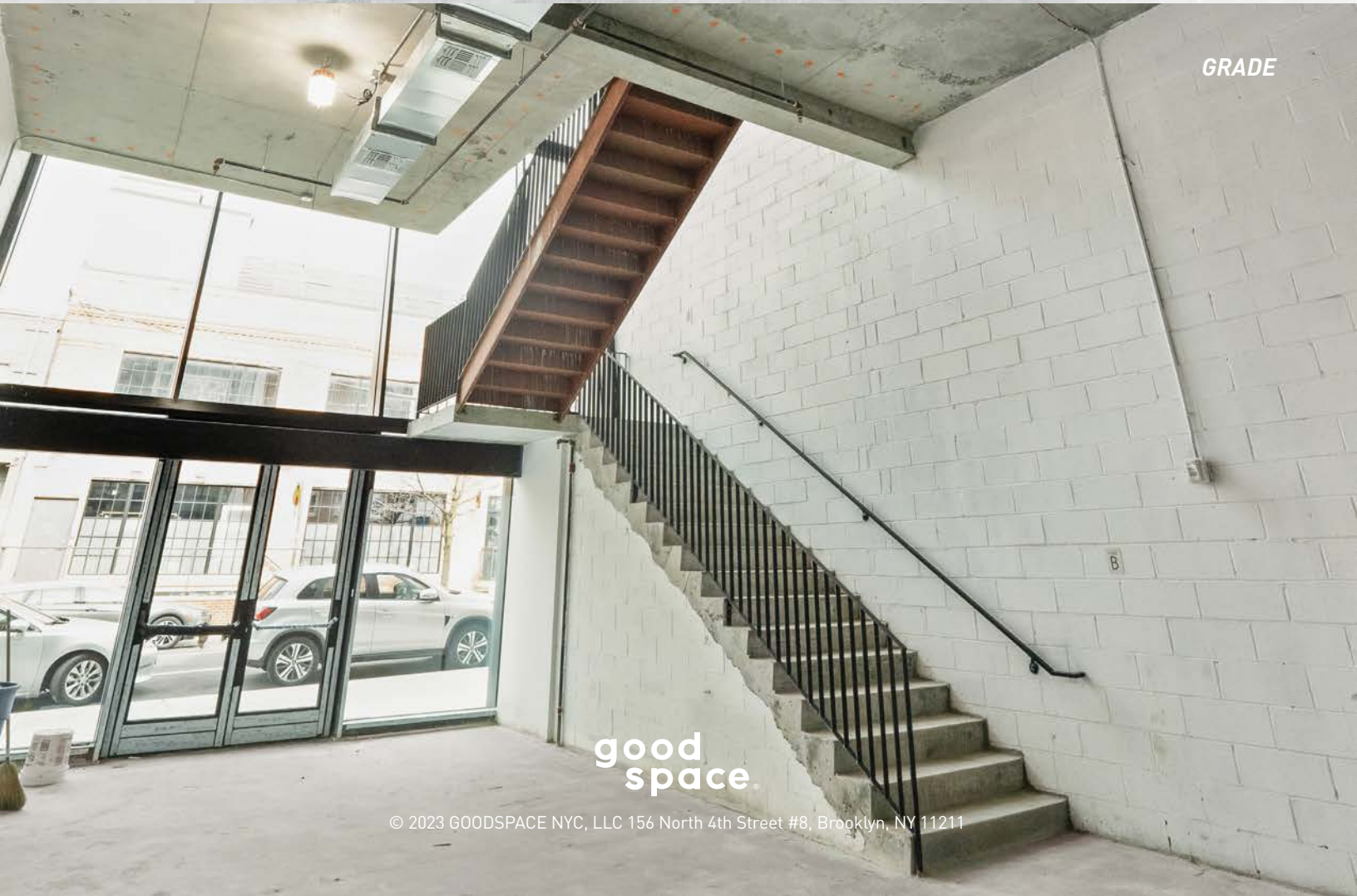
153 Berry Street

East Block between N 5th & N 6th Street

GRADE



GRADE



good
space.

153 Berry Street

East Block between N 5th & N 6th Street

SECOND FLOOR

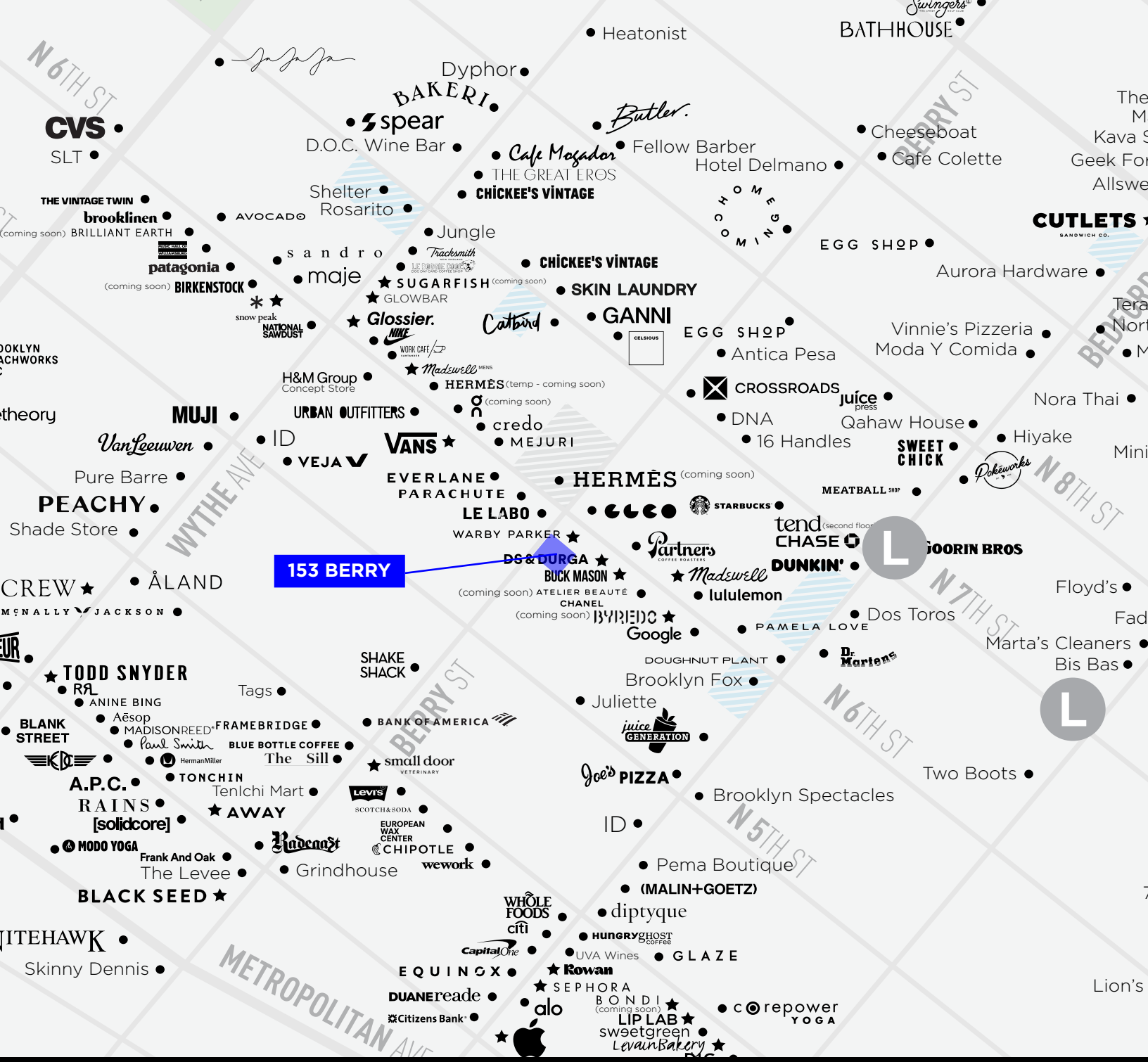


SECOND FLOOR TERRACE



good
space.

© 2023 GOODSPACE NYC, LLC 156 North 4th Street #8, Brooklyn, NY 11211



Annual Subway Ridership (2019)

L 9M Bedford Avenue

L G 4.6M Metropolitan Av/Lorimer St

Contact

Roberto Rhett
718.255.9900 x700
rr@goodspace.nyc

Hank O'Donnell
718.255.9900 x702
ho@goodspace.nyc