



# 155 Wythe Avenue

East Block between N 6th & N 7th Streets

**good  
space**<sup>®</sup>

licensed real estate broker

Size	Frontage	Ceiling Heights	Possession
2,500sf at Grade 1,000sf at Basement	25'	10'-20' at Grade 7' at Basement	Q2 2024

## Space Features

- Fully renovated space with new storefront & façade
- Unique interior details include large skylight in portion of space
- Double-height ceilings in rear
- Located just steps from best intersection in Williamsburg

## Neighborhood Tenants

**Glossier.**

\*  
snow peak

**HERMÈS**

Google

WARBY PARKER

Cafe Mezador

**Tracksmith**  
NEW ENGLAND

**Reformation**

**NIKE**

**SUGARFISH**

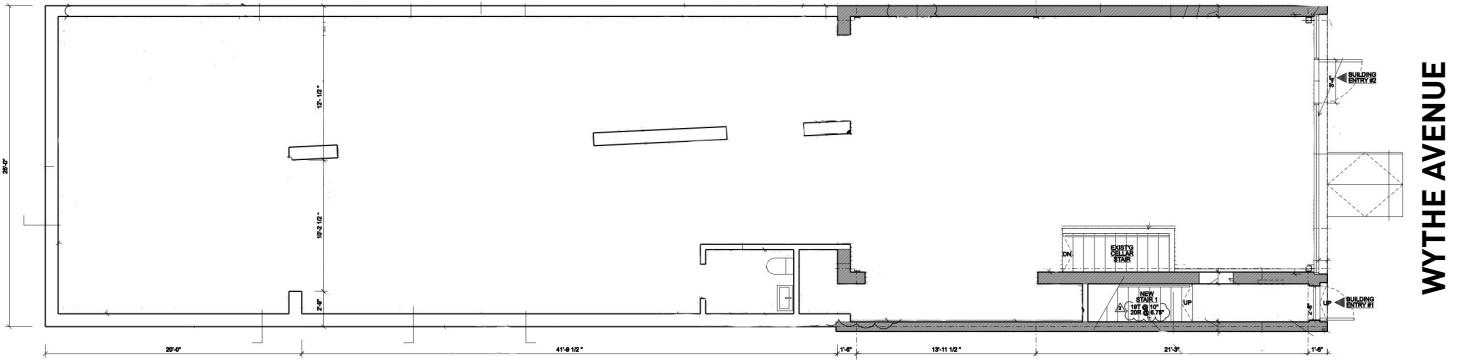
**patagonia**

**BIRKENSTOCK**

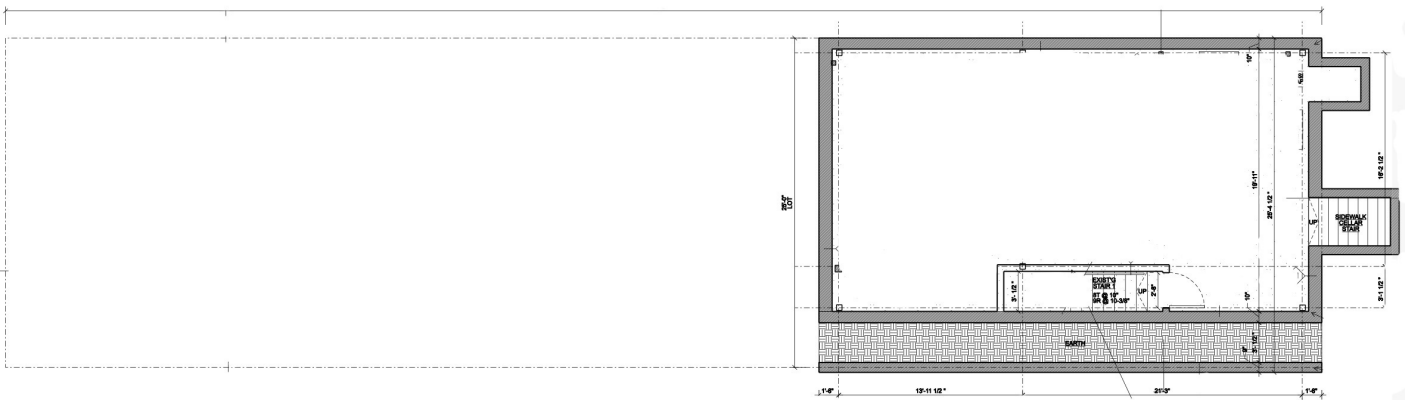
# 155 Wythe Avenue

East Block between N 6th & N 7th Streets

## GROUND FLOOR



## BASEMENT





Annual Subway Ridership (2019)

**L** 9M Bedford Avenue

**L G** 4.6M Metropolitan Av/Lorimer St

Contact

**Roberto Rhett**  
718.255.9900 x700  
rr@goodspace.nyc

**Hank O'Donnell**  
718.255.9900 x702  
ho@goodspace.nyc