



27-10 49th Avenue

SE Corner of 27th Street

**good
space**

licensed real estate broker

Size	Ceiling Heights	Possession	Term
20,313sf at Grade 13,850sf at 2nd 18,200sf at Parking Lot	16' at Grade 12' at 2nd	Immediate	Sublease thru 10/31/25 5 year option

Space Features

- Currently built out as vehicle service center
- 15,938sf of service area at grade
- 58 parking spaces
- 1,400amps power
- Four drive-in doors
- Convenient access to Manhattan, Queens, Bronx, and Brooklyn as well as Long Island via I-278 and I-495
 - 9 minutes to MANHATTAN
 - 25 minutes to JFK AIRPORT
 - 10 minutes to LAGUARDIA AIRPORT
 - 20 minutes to WORLD TRADE CENTER
 - 20 minutes to BARCLAYS CENTER

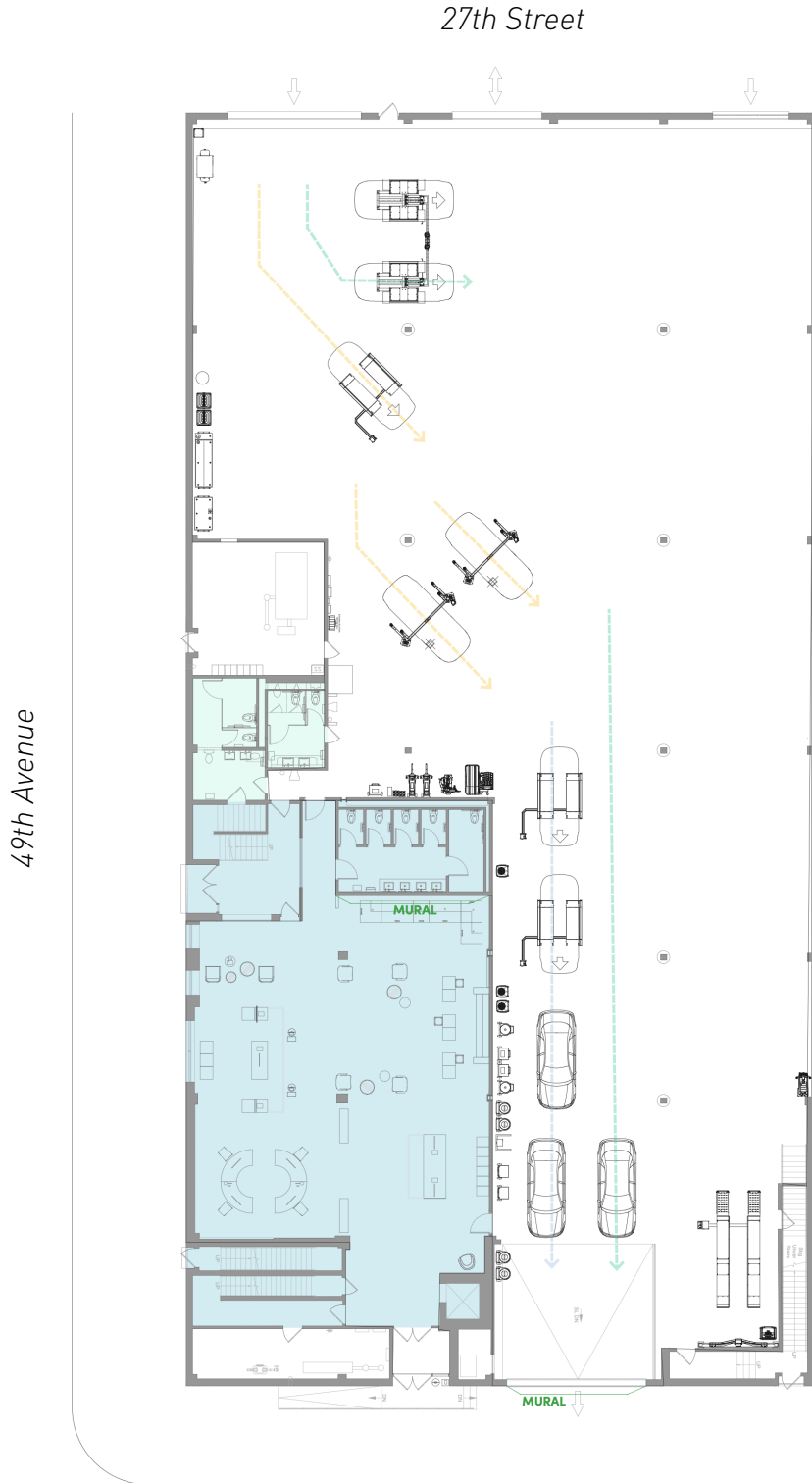
Neighborhood Tenants

C.C. Rental, FedEx, UPS Customer Center, Tesla Service, Silvercup Studios, Mount Sinai

27-10 49th Avenue

SE Corner of 27th Street

GRADE



good
space.

27-10 49th Avenue

SE Corner of 27th Street

SECOND FLOOR

27th Street

49th Avenue

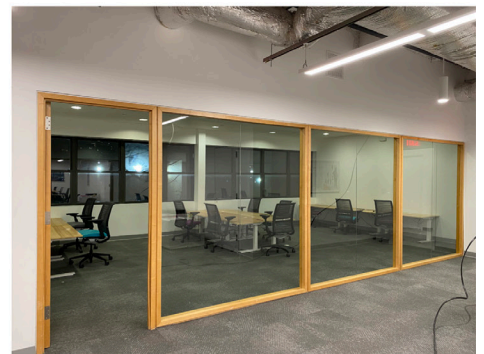
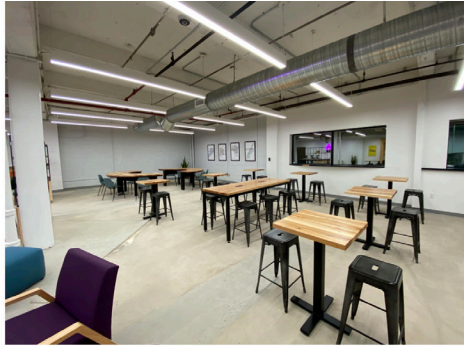


**good
space.**

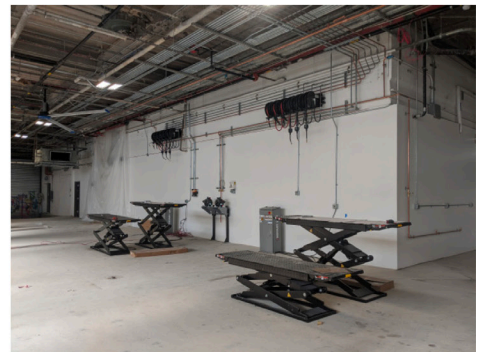
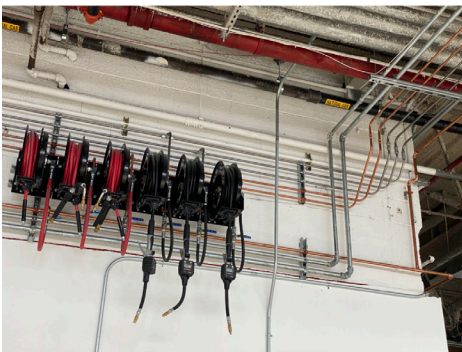
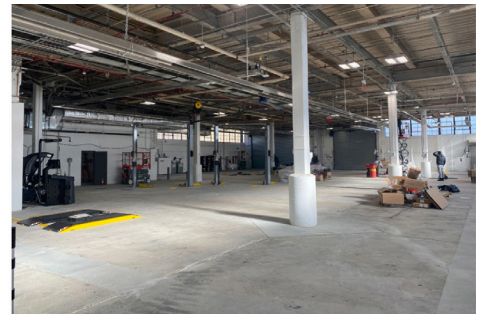
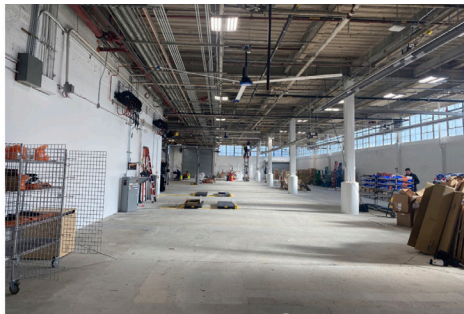
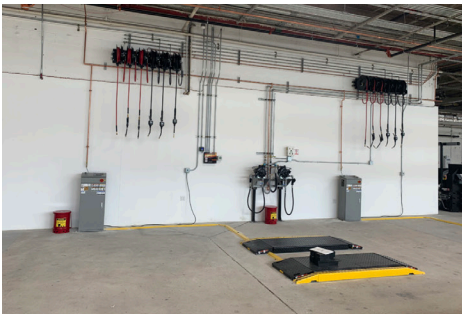
27-10 49th Avenue

SE Corner of 27th Street

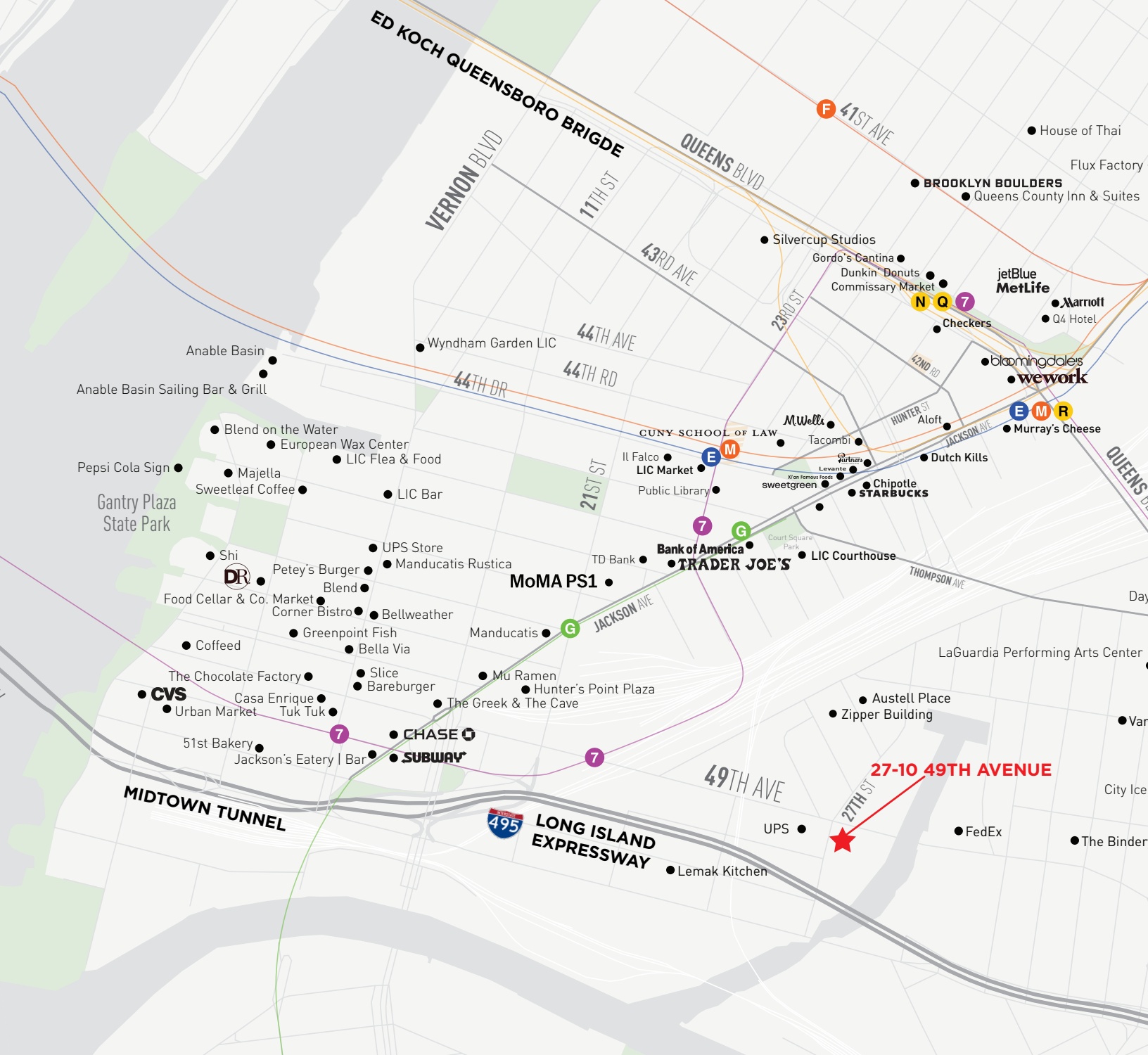
DRIVER SUPPORT AND BACK OF THE HOUSE



SERVICE AREA



good
space.



Average Annual Daily Traffic

82K Long Island Expressway
38K Thompson Avenue
130K Queensboro Bridge

Contact

Roberto Rhett
 718.255.9900 x700
 rr@goodspace.nyc

Hank O'Donnell
 718.255.9900 x702
 ho@goodspace.nyc